

Warfield | Binfield | Winkfield | Ascot



AFFORDABLE BESPOKE FITTED KITCHENS

Berkshire's Most Highly Recommended Kitchen Retailers
90% of our work comes from recommendations



WHICH? Trusted Trader
Professional & Trusted



Bespoke & Made For You
Custom Craftsmanship



Unrivalled Quality
Multi Award-Winning



10 Year Product Guarantee
For Your Peace of Mind



BOOK A FREE CONSULTATION

BRACKNELL SHOWROOM
MOSS END GARDEN CENTRE,
BRACKNELL, RG42 6EJ

WWW.APPLEWOODKITCHENS.CO.UK

01344 409560

Kids' Page

Can you solve our transport picture crossword?



9



10



11



4



5



FIND
6
DIFFERENCES



What was wrong with
the wooden car?
It wooden go!



Crossword Answers

Delivered **FREE** in Warfield, Binfield, Winkfield and Ascot. Also available at several pickup points including local libraries, garden centres and retail outlets.

For further information:

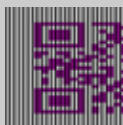
Tel. 01344 444657

Email

info@wordmag.co.uk

Website

www.wordmag.co.uk



Publisher

The Warfield Word Ltd

Printer

Norwood Press

This publication has been printed using eco-friendly inks, on paper from responsible sources.



Once you have finished with this magazine, please recycle or pass on to a friend or neighbour.

While all reasonable care is taken to ensure accuracy, the publisher cannot accept liability for errors or omissions relating to the adverts or editorials in this magazine nor for losses arising as a result.

No part of this publication may be reproduced without the permission of the authors as it is protected by copyright.

The publisher does not endorse any product or service offered in this publication.



DOMESTIC & COMMERCIAL WASTE REMOVAL

- **We clear: household, garage, shed, garden, building waste & much more!**
- **Free no-obligation quotes available.**
- **Reliable, hassle-free service.**
- **Call 07866 572351**
- **rubbishonthego.co.uk**
- **info@rubbishonthego.co.uk**



REAL SPAIN RETREATS

Fully escorted tailor-made trips for couples & singles. Explore & travel like locals in sunny Andalucia.



Every detail booked by us but **YOU** set the agenda. A perfect gift for birthday/anniversary surprises!

3 to 5 nights in secret Spain.

Explore & Travel like locals!

www.realspainretreats.com
info@realspainretreats.com



WARFIELD
PARISH COUNCIL

Brownlow Hall, Newell Green, Warfield RG42 6AB Tel: 01344 457777

E-mail: info@warfieldparishcouncil.gov.uk

Follow us on Facebook *Warfield Parish Council*

www.warfieldparishcouncil.gov.uk

Welcome to the March update from Warfield Parish Council



Community Grants

The application window is still open for community groups and organisations to apply for a community grant from the parish council. Warfield Parish Council allocates money each year to be awarded in grants that will benefit the residents of the parish.

If you and your group would like to apply for a grant the application form and process can be found on our website. The closing date for applications is Sunday 31 March 2024. Grants will be awarded and paid in May 2024.

Join our team

Warfield Parish Council are looking for two new members of staff to join our team.

Deputy Parish Clerk – 37 hours per week, permanent

Democratic Services Assistant – 156 hours per year – fixed term contract

For more information on the roles and how to apply visit our [website](https://www.warfieldparishcouncil.gov.uk). The closing date for applications is 12 noon on Monday 11 March.

Contact the Parish Council

The Parish Office is located at the Brownlow Hall and is open Monday-Friday 9.30am - 12.30pm.

If you need to contact us out of opening hours, please call us on **01344 457777** and leave a message or e-mail info@warfieldparishcouncil.gov.uk. You can also use these contact details if you wish to reach your local councillor.

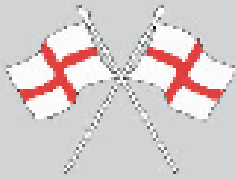


WE ARE HIRING

Deputy Parish Clerk
37 hours per week - permanent

Democratic Services Assistant
156 hours per annum - fixed term contract

APPLY NOW
For more information visit www.warfieldparishcouncil.gov.uk
Closing date: 12 noon 11 March 2024
Interviews to be held: 13 March 2024



JUBILEE BUILDING SUPPLIES LTD

The Builders Merchants



◆ **NATURAL STONE**

◆ **PORCELAIN**

◆ **CONCRETE PAVING**

◆ **50/60MM BLOCK PAVING**

◆ **ARTIFICIAL GRASS**

◆ **DECORATIVE AGGREGATES**

◆ **FENCING**

◆ **SLEEPERS**

E: jbs-admin@nikegroup.co.uk

T: 01344 789 400

www.jubileebuildingsupplies.co.uk



GREAT BRITISH SPRING CLEAN ***COMMUNITY LITTER PICK***



Sunday 24 March

10.30am – 12 noon

Meet at Larks Hill car park

(///photo.judges.adding)

Looking for enthusiastic volunteers to join us in our Keep Britain Tidy spring clean of the local area! Accompanied children welcome. Please wear suitable clothes and footwear, and bring gloves. Litter pickers and bags will be provided. Email for further information or contact Sheila Collings on 07794 375306.



www.warfieldenvgroup.wordpress.com
✉ warfieldenvironmentgroup@hotmail.com
% @WarfieldEnvGrp
f Warfield Environment Group



Next event – Newt Survey on Friday 19/Saturday 20 April



Join us for
our next
event

**Bickerton House care home,
Bracknell**

Friendship café

**The second Thursday of each month
10.30am - 12 noon**

Meet like minded people in the community for a chat over a hot drink and freshly baked treats. Enjoy the opportunity to meet our friendly team and explore our different care types and the lifestyle that we have at our home.

Trusted to care.



To book please call
01344 963073 or email
clairet.balgout@careuk.com



CHOCOLATE EGGS

A History of Easter's Delectable Delights

The association of chocolate eggs with Easter is a delightful convergence of cultural, religious, and culinary histories. Spanning centuries and continents, the story of how chocolate eggs became synonymous with Easter reveals a fascinating blend of tradition, innovation, and symbolism.

The egg has long been a symbol of new life and rebirth, a sentiment shared by many cultures and religions. In ancient times, eggs were often decorated in bright colours and given as gifts during spring festivals to celebrate the end of winter and the arrival of new life. This practice was adopted by early Christians as a symbol of Jesus Christ's resurrection, which is commemorated during Easter. The hard shell of the egg represented the sealed Tomb of Christ, and cracking the egg symbolized his resurrection from the dead.

In medieval Europe, the Christian observance of Lent, the forty days leading up to Easter, involved strict fasting rules. One such rule prohibited the consumption of eggs. However, chickens (who don't understand about Lent) continued to lay eggs during this period, leading to an excess by the time Easter arrived. This surplus led to the tradition of boiling eggs to preserve them, which were then decorated and given as Easter gifts.

The transition from real eggs to edible confectionery eggs began in the 17th and 18th centuries. Initially, these were not made of chocolate but of sugar or marzipan. The earliest chocolate eggs were solid, and a luxury item, enjoyed primarily by the wealthy due to the high cost of

chocolate at the time.

The Industrial Revolution brought significant advancements in chocolate production. The invention of the chocolate press in the 1820s by Conrad Van Houten helped in extracting cocoa butter from roasted cocoa beans. This process made chocolate more affordable and easier to mould into shapes, paving the way for the hollow chocolate egg.

In the 19th century, companies like J.S. Fry & Sons in Britain began mass-producing chocolate eggs. John Cadbury followed suit in 1875, perfecting the art of the hollow egg and bringing it to a wider market. The Cadbury Easter egg was a game-changer, transforming the chocolate egg from a luxury to a popular treat accessible to the general public.

The history of chocolate eggs at Easter is a rich tapestry that weaves together religious tradition, culinary innovation, and cultural celebration. From ancient symbolisms of new life and rebirth to the modern-day delights of Easter egg hunts and chocolate treats, the chocolate egg has become an enduring and beloved symbol of Easter celebrations around the world, enjoyed by all ages.



By Gemma Brown

A **TWISTED** SUBURBAN THRILLER

Buy now...if you dare!

From local author

David Palin



“5 ★★★★★ incredible book”

“unusual, compelling and brilliant”



eBook | Paperback | Audiobook



Gutter Cleaning by LawnPride

Are your gutters full of leaves, moss and standing water? Using specialist equipment let LawnPride clean them for you this Winter.

- Professional SkyVac system
- Camera system to check high up guttering
- No ladders involved - we use extendible poles
- Cleans out all leaves, debris and water from gutters
- Prevents damp from having blocked gutters

For free no obligation quote please call
01256 962884 or email info@lawn-pride.co.uk



LawnPride



FREE
GUTTER
INSPECTION



Paul White Plumbing Services

**Local
Plumber**

- Bathroom and shower tiling
- Taps, sinks, wash basins replaced
- Bathroom suite refurbishment
- Kitchen sink waste disposal units
- Hot water storage cylinders
- Attic cold water cisterns
- Radiators replaced or repositioned
- No job considered too small

Professionally qualified
Reliable, conscientious and
fully insured



Free quotation / visit
Please call:
01344 453 865

Carpenter

Specialist in domestic carpentry works
such as:

- Kitchen installation, modification
or maintenance
- Fitted wardrobes and bedroom
furniture
- Home offices
- Stair handrails and balustrades
- Internal doors
- Building 'Self Assembly' furniture

... if it's wood and inside your home,
talk to me!

Graham Taylor

Binfield 01344 423657
Mobile 07802 262555

graham@binfield-carpenter.co.uk

Sudoku

5	2			4		9		7
		3			5			
					7			2
9		1						
3			4			8	1	
1				8			4	9
7				6	2	3		8

How to Play

Fill in the grid so that
every row, every col-
umn, and every 3x3
box contains the digits
1 through 9, with no
repetition!

That's all there is to it.

You solve the puzzle
with reasoning and
logic - there's no
maths involved and no
adding up.

It's fun. It's challeng-
ing. It's addictive!

(solution on page 18)

Garden View

This month - Fantastic Fertiliser

This month the days get longer, and the sun gets stronger...we hope!

However, March is famously temperamental and if the soil where you are is still wet and cold then it's wise to delay planting and sowing until the temperature rises.

Plant nutrient reserves are low at this time of year so, as the soil warms up, it's time to think about fertiliser.

Many gardeners are a bit frightened of fertiliser. All those chemical symbols on the side of the packet are rather reminiscent of school chemistry lessons. In fact, the basics are quite simple.

NPK - This can be observed on the side of most fertiliser packages. The letters stand for:

N - Nitrogen

P - Phosphorous

K - Potassium

Together these are known as the macro-nutrients and each of them has its own use.

Nitrogen primarily feeds the leafy above-the-ground parts of the plants.

Phosphorous promotes strong roots.

Potassium makes grass hardier, promotes germination and improves vegetable and fruit yields.

The proportions of each macro-nutrient will be printed on the packet. Equal amounts of each nutrient make for a good general-purpose fertiliser.

A lawn will need a good balance of nitrogen and phosphorus to guarantee lush green grass with a healthy root system capable of withstanding dry spells. Fruiting plants need higher proportions of potassium.

There are other macro-nutrients: Carbon, Hydrogen and Oxygen, which plants obtain freely from the air and water; and calcium, magnesium, and sulphur, which should be present in any good general-purpose fertiliser.

Plants also need micro-nutrients: Iron, Manganese, Zinc, Boron, and Molybdenum.

Plants take all these nutrients and build everything they need from scratch, including vitamins. What plants cannot do is absorb vitamins directly from things such as pet food, milk or so-called fertilisers which contain vitamins, proteins, and fats.

So don't be intimidated by fertiliser. Decide what your plants need then read the label. It's easy as ABC...or rather NPK!



Caution!

Don't over-do it! It's best to feed little and often.

Don't fertilise in direct sun or the leaves may scorch.

Wait until the soil has warmed.

Keep out of reach of children!

By Rachael Leverton

OUR FAMILY HELPING YOUR FAMILY

For over 240 years, eight generations of the Lodge Family have been privileged to help local families in their time of need. We provide all funerals, whether modern, traditional, green or alternative, with care and compassion.



Robert, Chris, Andrew & Michael Lodge

★ Trustpilot



"The staff at Lodge Brothers have been sympathetic, understanding and supportive. They were with us every step of the way and we will be forever grateful for their support."

- Mr Robinson



ASK ABOUT OUR
PRE-PAYMENT
FUNERAL PLANS

Lodge
BROTHERS 1780
the family you can turn to

www.lodgebrothers.co.uk

ASCOT:	32 High Street	01344 537033
DEDWORTH:	67 Dedworth Road	01753 968893
SUNNINGDALE:	Chobham Road	01344 537032
WINDSOR:	47 St Leonards Road	01753 831400

Branches also in Egham & Englefield Green

FLORAL TRIBUTES • FUNERAL PLANS • WILLS & PROBATE



Woodchips
Tree surgery

Proud members of
Checkatrade.com
Where reputation matters



**COMPETITIVE
PRICES**

**FREE
QUOTATIONS
AND
ADVICE**

Family run business in Harmans Water, Bracknell

Fully Insured • NPTC Qualified • 10+ years experience

- Tree felling, reducing, reshaping and maintenance
- Stump grinding
- Hedge trimming and maintenance
- Wood chippings and logs for sale
- All green waste recycled

Contact us...



01344 425733 or 07867 523823
jose@woodchipsltd.co.uk www.woodchips.org.uk

D.M.S.

Landscaping & Building Services

- Garden Design and Build
- Hard and Soft Landscaping
- Patios
- Driveways
- Fencing
- Turfing
- Garden Clearance
- Paths
- All Walling
- All Sleeper work
- Artificial Lawn
- Log Cabins
- Extensions
- Conservatories
- All Groundwork
- All Brickwork
- Decking
- Planting
- Wooden Buildings

Email: danmadden1979@hotmail.com

Berkshire, Surrey & Hampshire

For a free quotation call Daniel:

Tel. 01276 452337

Mob. 07944 681780



Find us on Facebook
and Instagram



Registered with



COMPUTER HELP

Desktop PC Repairs - Slow-running PCs

Viruses - Memory upgrades

Broadband - Wireless Networks

Printing - Email - Software

Help - Advice - Tuition



New PCs built to your requirements

Home Users and Small Businesses

Tel. 01344 409019

Mob. 07944 976422

Warfield based



Tame Your Tech

How to declutter and organise your electronics

Keeping up with the latest gadgets can result in cable clutter and drawers full of unused devices. Use our simple guide to help you tidy up your tech, categorize your cables, and purge outdated gadgets.

Every home has one...a box or drawer full of random cables. Many of us are so terrified of throwing out any cable that we even transport this tangled mess with us when we move house! It's time to accept that you'll probably never use your old Nokia charger or the cable from a long-gone printer.

First consolidate. Organize your cables by type. This allows you to see how many of each you have. Keep three or four of each maximum. Neatly coil them and secure with cable ties or rubber bands. Use labelled containers for easy identification and storage – anything from takeout containers to Ziploc bags will work. There will be at least two or three unidentifiable cables so apply the rule: if you don't know what it is, discard it. Label the remaining ones for easy identification later.

Gadgets often come with boxes containing accessories and manuals. If space allows, keep these original boxes as they increase the gadget's resale value and make life easier for the next owner. If you are tight for space, store contents in smaller labelled containers. Photograph the box and any important codes for easy reference later.

Before discarding any gadget back up any important data and wipe the device. This means both deleting data and cleaning the gadget. Factory reset the device and

remove it from associated apps. This step not only protects your privacy but also simplifies future handovers.

Organize stored gadgets by category and store them in designated zones, preferably with their original boxes and accessories. This organization makes it easier to locate specific devices when needed.

Periodically search for gadgets to purge, checking under TVs, in nightstands, and kitchen cupboards. Decluttering frees up space and makes it easier to access frequently used items. Identify gadgets and accessories you no longer use and sell, donate, or dispose of them responsibly. Remember, gadgets depreciate over time, so it's best to pass them on while they still hold some value.

By following these steps, you can organize your technology, manage cables, and get rid of unnecessary gadgets. This process not only declutters your space but also ensures that your tech collection remains up-to-date and manageable. Responsible disposal of electronics is also key, as many devices can be sold, refurbished, or donated, extending their life and usefulness.



By Tom Hancock

A. ROONEY

Fencing & Gates

01344 752737
07708 444047

Free Estimates

Fully Insured

Work Guaranteed

References Available

We Clean Ovens

...so you don't have to!

Call us today to have your cooking appliances sparkling, using our own eco friendly products.



Our oven cleaning experts will leave you free to enjoy your valuable leisure time.



oven[®]
oven valeting service
Local | National | Affordable

**Call TODAY for
LOCAL Service**

oven.co.uk/oven_cleaning/bracknell

01344 669339

MOSS END GARDEN MACHINERY

At Moss End Garden Centre, Warfield, Bracknell RG42 6EJ



SALES • SERVICE • REPAIRS

**Lawn Mowers, Chainsaws,
Strimmers, Shredders,
Power Vacs, Hedge Cutters**



**OPEN
MON - SAT
9AM - 4.45PM
SUNDAY
9.30AM - 12PM**

**Quick Turnaround, Personal Service
Free Local Delivery & Collection**

BRACKNELL 01344 485765/862024

MOUNTFIELD

WEBB

HAYTER

MITOX

Guinness Chocolate Puddings

Indulgent, slightly boozy chocolate puddings. Perfect for

St Patrick's Day on March 17th



Preparation time: 25 mins

Cooking time: 18 mins

Add 1 hr chilling time.

Serves 4

Ingredients

150g unsalted butter, plus extra for the ramekins

200g dark chocolate (70% cocoa), roughly chopped.

90g golden caster sugar

3 large eggs

90ml Guinness

Good quality vanilla, chocolate or salted caramel ice cream to serve.

Method

Butter four 9 x 5cm ramekins.

Place the butter, chocolate and a generous pinch of salt into a heatproof

bowl. Set over a small pan of barely-simmering water and stir until melted, then remove from the heat and leave to cool a little.

Place the sugar and eggs into a large mixing bowl and beat with an electric whisk until pale, doubled in volume and thick enough to leave a trail. Gently fold in the melted chocolate and the Guinness. Spoon the mixture into the ramekins, then chill in the fridge for 1 hr. In the meantime, place a baking tray on the top shelf of the oven and preheat to 200C/180C fan/gas 6.

Place the chilled ramekins on the hot baking tray and bake for 18 mins. Remove from the oven and leave to stand for a minute. The centres will sink a little. Pop a scoop of ice cream into the hollow and serve.

Happy St. Patrick's Day.

This new and exciting travel company is pleased to offer you a selection of Day Excursions and UK Short Breaks

DAY EXCURSIONS

Picking up from a point near you.

- Coastal Tours * Lunch Drives
- Theatres * Christmas Markets
- Gardens * Historic Houses

DOOR2DOOR SHORT BREAKS

Including our Taxi Service Home/Coach/Home Tours throughout England, Scotland, Wales, Southern Ireland and Europe

2024 Brochures Available Now

For further details check out the website, email us or telephone our office for a copy of our brochure

www.seekerstravel.co.uk

E mail – info@seekerstravel.co.uk

Telephone – 01252 761047



Steve Coventry
Painter and Decorator

19 Worcestershire Lea
Warfield Berkshire RG42 3TQ

- Interiors & Exteriors
- Coving
- Painting
- Wallpapering
- Paint Effects
- Insurance Work

Free Estimates



01344 486555 • 07810 348982



Simply Green LANDSCAPES



*Make your neighbours
"Simply Green" with envy*

T 0118 9790715
F 0118 9790715
W www.simplygreenlandscapes.co.uk

- Do you want to be admired for your well maintained gardens?
- Do you want a regular, reliable gardening company?
- Do you want all of this with no stress?

Then simply look no further!

- Regular garden maintenance and tidy ups all available.

Useful Numbers

Crimestoppers 0800 555 111
 (Anonymous freephone number)
 Thames Valley Police 101
 (Non-emergency number)
 Emergency 999

Gas Emergency 0800 111999
 Electricity Emergency 0800 0727282
 Power Cut Helpline 105
 Water Emergency 0800 3169800

Bracknell Forest Council 01344 352000
 (Customer Services)
 Bracknell Town Council 01344 420079
 Binfield Parish Council 01344 454602
 Warfield Parish Council 01344 457777
 Winkfield Parish Council 01344 885110

ChildLine 0800 1111
 Samaritans 116 123
 DrinkLine 0300 1231110

National Rail Enquiries 03457 484950
 Gatwick Airport 0344 8920322
 Heathrow Airport 0844 3351801

NHS help & advice 111
 Heatherwood Hospital 0300 6145000
 Wexham Park Hospital 0300 6145000
 Frimley Park Hospital 0300 6145000
 Royal Berkshire Hospital 0118 3225111

South Hill Park 01344 484123
 Bracknell Leisure Centre 01344 454203
 The Look Out 01344 354400

Sudoku Solution

5	2	6	8	4	1	9	3	7
4	9	7	2	3	6	1	8	5
8	1	3	9	7	5	6	2	4
6	8	4	3	1	7	5	9	2
9	5	1	6	2	8	4	7	3
3	7	2	4	5	9	8	1	6
1	6	5	7	8	3	2	4	9
2	3	8	5	9	4	7	6	1
7	4	9	1	6	2	3	5	8

SPRING EQUINOX

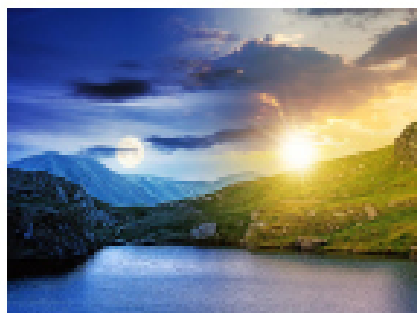
March 20th

We hear the terms 'equinox' and 'solstice' bandied about, but what do they actually mean?

These terms both relate to the Earth's orbit around the sun and its axial tilt, but they refer to different phenomena and occur at different times of the year.

Equinox: This occurs when the sun is exactly above the Equator, causing day and night to be of approximately equal length. This happens twice a year, around March 20-21 (the vernal or spring equinox) and September 22-23 (the autumnal or fall equinox). These dates can vary slightly each year.

During an equinox, the Earth's axis is not tilted toward or away from the sun. As a result, both the Northern and Southern Hemispheres experience roughly equal amounts of daylight and darkness. Equinoxes are often associated with the transition of seasons: the vernal equinox marks the beginning of spring, and the autumnal equinox signifies the start of fall



in the respective hemispheres.

Solstice: This occurs when the sun reaches its highest or lowest point in the sky at noon, marked by the longest and shortest days. It happens twice a year, around June 20-21 (the summer

solstice) and December 21-22 (the winter solstice).

During a solstice, the Earth's axis is tilted maximally toward (summer solstice) or away (winter solstice) from the sun. This results in the longest day of the year during the summer solstice and the shortest day of the year during the winter solstice in the respective hemispheres.

Solstices are significant in many cultures and are often associated with festivals and rituals. The summer solstice is typically seen as the start of summer, while the winter solstice is commonly considered the beginning of winter.

By Tom Hancock

A SOUTH HILL PARK MUSICAL

A TALE AS OLD AS TIME

Tue 9 – Sun 14
April 2024

Disney
BEAUTY AND THE BEAST
THE BROADWAY MUSICAL

MUSIC BY
ALAN MENKEN
LYRICS BY
HOWARD ASHMAN &
TIM RICE
BOOK BY
LINDA WOOLVERTON
ORIGINALLY DIRECTED BY
ROBERT JESS ROTH
ORIGINALLY PRODUCED BY
DISNEY THEATRICAL
PRODUCTIONS

40 YEARS
OF THE WILDE
THEATRE

SOUTHILLPARK.ORG.UK • BOX OFFICE 01344 484 123

Spring Cleaning

A Guide to Efficient and Effective Cleaning

Spring cleaning is an annual ritual that not only signifies the end of winter but also heralds a fresh, clean start for your home. While the task may seem daunting, with the right approach, it can be both efficient and enjoyable.

Planning: The most effective spring cleaning begins with a plan. Before diving in, make a list of all the areas in your home that need attention. This list should be comprehensive, covering everything from the attic to the basement, including often-neglected spaces like the tops of cabinets and under the beds. Break down the tasks into manageable sections and assign them to specific days. This approach ensures that the work is spread out, making it less overwhelming.

Decluttering: A crucial step in spring cleaning is simplifying your space. A cluttered home complicates cleaning and adds to your stress. Start by sorting through your belongings and categorize them into items to keep, donate, or discard. A good rule of thumb is to get rid of anything you haven't used in the past year. This process not only clears physical space but also creates a more peaceful and enjoyable living environment.

Deep Cleaning: Spring cleaning is the time to engage in deep cleaning – tasks that go beyond your regular cleaning routine. This includes washing windows, cleaning carpets, and dusting hard-to-reach areas. Consider moving furniture to clean the areas beneath and behind them. These tasks require more time and effort but are essential for maintaining a healthy living environment.

Organizing: After cleaning and decluttering, focus on organizing your



space. Use storage solutions like shelves, boxes, and baskets to keep your belongings orderly. Proper organization not only enhances the appearance of your home but also makes it easier to maintain

cleanliness.

Eco-Friendly Cleaning: Protect your health and the environment by incorporating eco-friendly cleaning products into your routine. Natural alternatives like vinegar, baking soda, and lemon juice are effective, safe, and environmentally friendly. These solutions not only clean effectively but also reduce the levels of toxic substances in your home.

Be systematic: A methodical approach ensures that no area is overlooked. Start in one room and don't move to the next until you have completed all the tasks on your list for that space. This approach provides a sense of accomplishment and keeps you motivated too.

Maintenance: Post-spring cleaning, it's important to maintain the cleanliness and organization of your home. Develop a regular cleaning schedule and stick to it. Regular maintenance will make spring cleaning next year much easier by preventing the accumulation of dirt and clutter.

Embrace the Benefits: Spring cleaning is more than a seasonal chore; it's an opportunity to refresh and rejuvenate your living space, creating a more pleasant and healthy environment for you and your family.

By Sarah Davey

Advertising in *The Word*

Would you like to advertise in The Word?

Please call: **01344 444657**

or

Email: info@wordmag.co.uk

We can design your advert, if required

The copy deadline for the April edition is
11th March 2024

www.wordmag.co.uk



- Tiling & Slating
- Flat Roofs
- Leadwork
- Free Quotes & Advice
- From Small Repairs to Complete New Roofs

M: 07814 650486

W: monarchroofingservices.co.uk



D B Roofing

**Accomplished Craftsmen
with a wealth of experience**

Tiling and Slating Lead Work Flat Roofs
Re-Roofs Re-Pointing
General Roof Maintenance Fascias, Soffits & Guttering

Free Estimates All Work Guaranteed

Call for a friendly and affordable service:

01344 453732 07799 037866

dbroofing.org.uk



Rightio Plumbing & Heating

01344 721 925

**We work in Binfield,
Warfield, Winkfield,
Whitegrove Ascot
and all surrounding
areas.**

COMPETITIVE RATES

- ✓ Fast Response
- ✓ All Work Guaranteed
- ✓ Flexible Appointment Times

**12 Month
guarantee
on labour!**
Excludes Workages

**OAP
Discount
Speak to
us today!**

**1-2 Hour
Emergency
Response
time!**



©2021

OUR SERVICES

- ✓ Boiler Breakdowns
- ✓ Boiler Servicing
- ✓ Radiators & Pipes
- ✓ Tanks & Cylinders
- ✓ Toilets & Taps
- ✓ Leaks & Bursts
- ✓ Showers
- ✓ Clearing Blockages
- ✓ Pipework Replacement
- ✓ Gas Safe Certified



Heat Plant Services

For all your heating needs

Oil Gas LPG

Service • Repair • Installation
Domestic & Commercial

Oil Heating Specialists
Oil Boiler Replacements
Smart Controls
Radiator and System Upgrades
Gas and LPG Boiler Replacements
Power Flushing
Landlord Certificates
Copper and Unvented Cylinders

Established Over 40 Years

01344 427 861

www.heatplantservices.co.uk



Need help with
your accounts?

mb's
Accounting Services

- Book-keeping
- VAT Returns
- Invoicing
- CIS Processing
- Self Assessment

Give us a call today.
It could take a lot off your mind.

Tel: **01344 860140**

Website: www.marleycroft.co.uk

Email: lyn@marleycroft.co.uk



FISU MEDITATION

COME AND HEAR ABOUT THE BENEFITS OF MEDITATION TO RELIEVE
STRESS & ANXIETY AND HAVE A HAPPIER LIFE



OUR FREE INTRODUCTORY TALKS RUN WEEKLY AT OUR CENTRE IN
BRACKNELL

YOU CAN BOOK YOUR PLACE HERE: WWW.FISU.ORG

OR CALL: 0790 6686788

INDEX

Accounting Services

MBB

Books

David Pailin

Care

Care UK

Computers

Computer Help

Decorators

Steve Coventry

Fencing Services

A Rooney Fencing & Gates

Funeral Directors

Lodge Brothers

Gardens/Landscaping

22 Moss End Garden Machinery
Simply Green
Woodships Tree Surgery

Gutter Cleaning

Lawn Pride

Health & Fitness

F18U Meditation

Kitchens

Applewood Kitchens

Oven Cleaning

Ovenu

Plumbing & Heating

Heat Plant Services 22
Paul White Plumbing 10
Rightio Plumbing & Heating 21

Property Maintenance

16 Carpenter 10
17 DM3 13
12 Jubilee Bathroom Supplies 6

Roofing

8 DB Roofing 21
Monarch Roofing Services 21

Theatre

Ocean Theatre Company 24

Travel

Real Spain Retreats 3
Seekers Travel 17

Waste Collection

Rubbish On The Go 3



Ocean Theatre Company proudly presents

CHICAGO

Book by Fred Ebb and Bob Fosse Music by John Kander Lyrics by Fred Ebb
Based on the play by Maurine Dallas Watkins Script adaptation by David Thompson

APRIL 5th - 7th

BritVic Theatre
LVS Ascot



book at:

www.oceantheatre.com

FIND OUT MORE



THE WORD

Tel. 01344 444657

E-mail: info@wordmag.co.uk Web: www.wordmag.co.uk

