

# WITH THE WORD

March  
2018

*The business directory and community magazine of the RG42 & SL5 areas, delivered FREE*



## Applewood Kitchens and Bedrooms



The Village | Moss End Garden Centre | Warfield | Bracknell | RG42 6EJ

23 Brockenhurst Road | South Ascot | Berkshire | SL5 9DJ

Call **01344 409560** [www.applewoodkitchens.co.uk](http://www.applewoodkitchens.co.uk) email: [info@applewoodkitchens.co.uk](mailto:info@applewoodkitchens.co.uk)

See what our customers are saying [www.applewoodkitchens.co.uk](http://www.applewoodkitchens.co.uk) then click on *testimonials* tab

[WWW.WORDMAG.CO.UK](http://WWW.WORDMAG.CO.UK)

FREE

# Kids' Page



## Disney Film Word Grid

Aladdin  
Cinderella  
Dumbo  
Frozen  
Mulan  
Pinocchio  
Pocahontas  
Robin Hood  
Snow White  
The Aristocats  
The Jungle Book  
The Lion King  
Zootopia



## Can you match the song to the Disney Film?

**BEAUTY AND THE BEAST**

**SNOW WHITE**

**THE LION KING**

**THE JUNGLE BOOK**

**CINDERELLA**

**FROZEN**

**THE LITTLE MERMAID**



**LET IT GO**

**UNDER THE SEA**

**THE BEAR NECESSITIES**

**HAKUNA MATATA**

**ONCE UPON A DREAM**

**A DREAM IS A WISH YOUR HEART MAKES**

**BE OUR GUEST**



Beauty and the Beast - Be Our Guest  
Snow White - Once Upon A Dream  
The Lion King - Hakuna Matata  
The Jungle Book - The Bear Necessities  
Cinderella - A Dream is a Wish Your Heart Makes  
Frozen - Let it Go

**Match the Song to the Film Answers**



**Word Search Answers**



Delivered FREE in Warfield, Ascot, Winkfield and Binfield.

Also available at several pickup points including local libraries, garden centres and retail outlets.

### For further information:

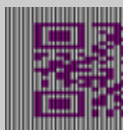
Tel. 01344 444657

### Email

info@wordmag.co.uk

### Website

www.wordmag.co.uk



### Publisher

The Warfield Word Ltd

### Printer

Warwick Printing Company Ltd

*This publication has been printed using vegetable-based inks, on paper from sustainable sources.*



Please recycle this magazine when you have finished with it.

While all reasonable care is taken to ensure accuracy, the publisher cannot accept liability for errors or omissions relating to the adverts or editorials in this magazine nor for losses arising as a result.

No part of this publication may be reproduced without the permission of the authors as it is protected by copyright.

The publisher does not endorse any product or service offered in this publication.

*Regular Cleaning the way you want it done*

*Typically from £12.50 per hour*



*Book Now!!*

**01189 680 949**

*www.domestique.co.uk/wokingham*

**Domestique**<sup>®</sup>  
CLEANING EXCELLENCE



## House Plans & Architectural Drawings

**We provide a complete design and planning service for householders who wish to improve or enlarge their homes.**

We specialise in preparing plans for approval and will deal with all the paperwork. We will visit you to talk over your requirements, suggest design ideas to make your project a success and submit your plans for approval.

We have spent many years working 'hands on', building extensions and new homes to NHBC standards, enabling us to bring a wealth of practical experience to your project.

**01189 122 319**

*free consultation at your home*

**Good Developments Ltd**

info@gooddevelopments.co.uk www.gooddevelopments.co.uk

# Warfield Parish Council

7 County Lane, Warfield RG42 3JP Tel: 01344 457777

E-mail: [info@warfieldparishcouncil.gov.uk](mailto:info@warfieldparishcouncil.gov.uk)

Follow us on Twitter @WarfieldPC and Facebook Warfield Parish Council

[www.warfieldparishcouncil.gov.uk](http://www.warfieldparishcouncil.gov.uk)



## Welcome to the March update from Warfield Parish Council

### Frost Folly and a new open space for Warfield

Works to upgrade the car park at Frost Folly, on Wellers Lane are nearing completion, as is the new open space behind it. This is known as SANG land (Suitable Alternative Greenspace) and has been created as a result of development taking place in Warfield. The site will feature a 2.3km circular mown footpath and will be a mix of meadow grassland and woodland when fully established.

### Draft Bracknell Forest Local Plan / Councillors Surgery

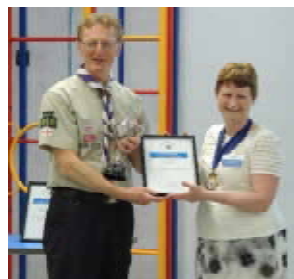
On Thursday 1 March (5pm-8pm) and Saturday 3 March (10am-1pm) we will be hosting Bracknell Forest Council who will be presenting the Draft Local Plan for residents to pop in, see the plans and ask any questions. As a result there will be no councillor surgery on Saturday 3 March. Our next surgery will take place at the Parish Office on Saturday 7 April between 10am and 12noon. If you need to contact your local parish councillor please get in touch with the Parish Office.

### Nominations wanted – The Warfield Award

Last year, Derek Salter received the Warfield Award for his contribution to scouting in Warfield. Who will win the award this year?

If you know of an individual, couple or group who have made a significant contribution to the community in Warfield and you think they should be recognised please let us know. Closing date for nominations is Wednesday 21 March.

The award will be presented at our annual Parish Assembly on Wednesday 2 May. Look out for more details in next months edition of the Word.



## VEGETABLE TAKE & GROW

**Sunday 29 April 11:30am-1.00pm Whitegrove Community Centre**

**Free Plants & Seeds!**

**Seed Swaps**

**Children's activities**

**Warfield Gardening  
Competition**

Take & grow vegetable & herb seedlings. Plus collect free sunflower seeds to enter our Tallest Sunflower Competition.

Kids, plant mustard cress, and sunflower seeds, design your own plant label and 'Feel the Vegetable' Competition

**All Welcome!**

**Free entry**

**Refreshments  
available**

A Warfield Parish Council event



# Transform your lawn with Trulawn

Trulawn Artificial Grass is suitable for lawns, children's play areas, patios, balconies and pool surrounds.



Child Safe



UV Stabilised



No Mud



Quick Draining



Pet Friendly



No Watering



Durable



No Mowing



No Pesticides

**Arrange your FREE site survey:**



0333 456 0735



Vulcan Way, Sandhurst, GU47 9DB



[trulawn.co.uk](http://trulawn.co.uk)

# Parks and Countryside Events Programme

[www.bracknell-forest.gov.uk/parks-and-countryside/events](http://www.bracknell-forest.gov.uk/parks-and-countryside/events)

## Ranger-led Walks

**Wednesday, 14 March. Lily Hill Park walk - up to 2 miles (1 hour)**

**Meet:** Lily Hill Park north car park, off Lily Hill Road, Bracknell, RG12 2RX.

**Tuesday, 20 March. Chapel Green and back - up to 7 miles (2½ hours)**

**Meet:** Heath Lake car park. Map grid ref: 827 654

Timings and distances are approximations only. For more information tel: 01344 354441.

For walking opportunities visit: [www.bracknell-forest.gov.uk/walking](http://www.bracknell-forest.gov.uk/walking)

## Other Events

**Friday 2 March, 10am-11am. Community Litter Pick at Lily Hill Park.**

**Meet:** North car park, off Lily Hill Road, Bracknell, RG12 2RX

**Tuesday 6 March, 10am-11.30am. Nature Trail Walk at South Hill Park.**

Join us for a relaxed walk exploring the new nature trail at South Hill Park.

**Meet:** Courtyard in front of SHP reception, South Hill Park, Ringmead, Bracknell, RG12 7PA.

## Easter Treasure Hunts

Solve a series of festive clues to earn a chocolate prize! Morning or afternoon events available.

Events run 10am – 11.30am or 1pm – 2.30pm. Cost: £3. Booking required – T: 01344 354441.

**Tuesday, 3 April**

**Meet:** Gazebo on grass field, Ambarrow Court, Wokingham Rd, Sandhurst, GU47 8JB.

**Wednesday, 4 April**

**Meet:** Gazebo on rear field, South Hill Park, Ringmead, Bracknell, RG12 7PA.

**Thursday, 5 April**

**Meet:** At the Giant Picnic Table, Lily Hill Park, off Lily Hill Road, Bracknell, RG12 2RX.



## Historic Parks Gardening Clubs

**South Hill Park Gardening Group**

**Every Wednesday, 10am – 12 noon**

Join our small, friendly group who help to keep the grounds of South Hill Park looking beautiful! Tea/coffee provided. Please bring gardening gloves if you have them.

**Meet:** Rear terrace at South Hill Park, Ringmead, Bracknell, RG12 7PA.

**Cultivating Friends at Lily Hill Park**

**Every Thursday, 10am – 12 noon**

Get stuck in with the Lily Hill Park gardening team and enjoy a cup of tea/coffee amongst friends. Tea/coffee provided. Please bring gardening gloves if you have them.

**Meet:** North car park, off Lily Hill Road, Bracknell, RG12 2RX.

## Bracknell Forest Natural History Society talks

Evening meetings are usually held in the Recital Room at South Hill Park, Ringmead, Bracknell, RG12 7PA. Visitors are welcome and there is no need to book. Meetings start at 7:30pm and end at about 9:30pm (Doors open from 7:15pm), with a break for refreshments in between. Membership is £12 per year with an entrance fee of £1 for evening meetings – or come along as a visitor and pay just £3 for the evening.

**March 19:**

**April 16:**

**Conservation in Conversation**

**British Bats**

For further details about these events visit: [www.bfnathistsoc.org.uk](http://www.bfnathistsoc.org.uk) or contact Gill Cheetham on 01344 423440

## Event Booking

Please pre-book events where stated by contacting the number provided. Events are free unless otherwise stated.

Payment can be made prior to the event or on the day. This is non-refundable.

Events may be filmed and/or photographed - please specify if you do not wish to be included in this.

For outdoor events please wear suitable clothing and footwear. All children under 16 must be accompanied by a responsible adult.

## Contacts

Parks & Countryside Service

Bracknell Forest Council

The Look Out Discovery Centre

Nine Mile Ride, Bracknell, Berkshire RG12 7QW

[rangers@bracknell-forest.gov.uk](mailto:rangers@bracknell-forest.gov.uk)

[www.bracknell-forest.gov.uk/parksandcountryside](http://www.bracknell-forest.gov.uk/parksandcountryside)

01344 354441

Would you like your oven Gleamed?



**FREE  
No-Obligation  
Quotations  
Call NOW!**

**Call Paul today on  
01344 775895**

**www.ovengleamers.com**

**NOBLE  
PAINTING**

**HE'S BEEN SAYING  
HE'LL DO IT  
— FOR YEARS**

Let the professionals take care of your  
**EXTERNAL PAINTING**  
& decorating work this year

Book your free consultation now by visiting  
**WWW.NOBLEPAINTING.CO.UK**  
Or calling 07460035053  
Email [info@noblepainting.co.uk](mailto:info@noblepainting.co.uk)



the wellness centre

Helping **YOU** to achieve **YOUR** optimum wellbeing

If you are in pain, have a neurological illness such as Parkinson's, suffer from stress or anxiety, poor posture, hayfever, allergies or feeling generally out of sorts, then come and talk to us at the wellness centre.

Based in Moss End Garden Village, are a group of therapists who work as a team to help you feel the best that you can.

**JUST SOME OF THE THERAPIES ON OFFER ARE**

- ◆ Bowen Fascial Release ◆ Massage ◆ Homeopathy and Cease ◆ ACT Therapy ◆ Reiki ◆
- ◆ Indian Head Massage and Ayurveda Massage ◆ Crystal Healing ◆ Body Mind Works ◆
- ◆ Physio ◆ Hypnotherapy ◆ Aromatherapy ◆ Mindfulness and Meditation ◆

**REIKI TUITION COURSES ALSO AVAILABLE**

Call us now on **07710 722615** or **01344 531629**  
to discuss your well-being or to book an appointment.  
Alternatively visit **www.thewellnesscentre.co**

# Warfield Environment Group ***NEEDS YOUR HELP!***



**Do you live in Bracknell Forest?**

***Do you have a blue recycling bin?***

**Do you collect recycling reward points?**

***Do you have points to spare?***

Warfield Environment Group has been nominated as a good cause in the Bracknell Forest Council recycling incentive scheme and will receive a share of £1000 based on the number of recycling reward points donated to the Group between

***Thursday 1 February and Monday 30 April.***

**You can donate your points by visiting:**



**or**

***[www.bracknell-forest.gov.uk/recycling-incentive-scheme/good-causes](http://www.bracknell-forest.gov.uk/recycling-incentive-scheme/good-causes)***

**To improve the local environment and increase biodiversity in the area,  
Warfield Environment Group will use the money to buy more:**

***trees, shrubs, bulbs and seeds, and materials to build bird and bat boxes.***



[www.warfieldenvgroup.wordpress.com](http://www.warfieldenvgroup.wordpress.com)

# Peter Hunt Heat & Plumb

Your Local **GAS SAFE** Engineer

## Gas & Heating services including...

- Boilers and full central heating systems installed
- Maintenance plans on new installations
- Landlords Gas Safety Certificates
- Boiler Servicing and Repairs
- Emergency Breakdowns
- Power Flushing
- Gas Hobs and Cookers
- Gas Fires



## Plumbing services including...

- Bathroom suites, showers and taps
- Water softener installation

We are a Warfield based business offering a reliable and professional service.

My NEW Number is **07795 224854**

Email: [heatandplumb@gmail.com](mailto:heatandplumb@gmail.com)

## Experienced Painter & Decorator



Happy to carry out  
interior & exterior work.

Any size job undertaken, from one  
wall to a whole house!

Locally based, reliable, friendly and  
competitively priced from £130 per day.

References available and happy to  
provide estimates with no obligation.

**Please call Thomas on  
07825 950865**

# Supagrass<sup>®</sup>

## Lawn Treatment Service

*Helping you achieve the lawn you've always wanted.*

Phil Adshead runs Supagrass in the Berkshire area. He has helped over 1000 customers improve their lawns, and has looked after the greens at two of the top 10 golf courses in the world including Sunningdale & Augusta National Golf Club.

For a **FREE** lawn assessment and quote with Phil call  
01256 461388 or email [rbf@supagrass.co.uk](mailto:rbf@supagrass.co.uk)



Lawn Fertilising



Aeration



Scarification



Weed Killing



Moss Control



Lawn Mowing

[www.supagrass.co.uk](http://www.supagrass.co.uk)



# Richard J. Milam T.B.G Home

- \* Interior and Exterior Painter and Decorator
- \* General Carpentry
- \* Household Electrics
- \* Ceramic Tiling
- \* Gardening

*No Job too small,  
Free Estimates and Fully  
Insured*

*Call now on  
Wokingham 01189 776617 or  
Mobile 07771 633 620*



Professional, reliable service. Fully insured and  
all work guaranteed.

For all your electrical needs, including:

- Rewires
- Indoor & outdoor lighting
- Installations
- Emergency repairs
- Inspection & testing
- Consumer unit upgrades

Web [www.warfieldelectrical.co.uk](http://www.warfieldelectrical.co.uk)

Phone 07853 889925

Email [info@warfieldelectrical.co.uk](mailto:info@warfieldelectrical.co.uk)

## Sudoku

4				8				
	2		3		7	5		8
7			9	5			4	2
	5	7		6	9		8	1
		4				9		
8	9		4	1		2	3	
5	7			9	4			3
1		2	5		3		9	
				2				4

### How to Play

Fill in the grid so that every row, every column, and every 3x3 box contains the digits 1 through 9, **with no repetition!**

That's all there is to it.

You solve the puzzle with reasoning and logic - there's no maths involved and no adding up.

It's fun. It's challenging. It's addictive!

(solution on page 18)

# HEAT PLANT SERVICES



- Boiler maintenance - service and repair
- Heating system upgrades
- Oil heating specialists
- Gas Safe registered
- OFTEC registered
- Established over 30 years

**01344 427861**

[www.heatplantservices.co.uk](http://www.heatplantservices.co.uk) [info@heatplantservices.co.uk](mailto:info@heatplantservices.co.uk)

Heat Plant Services Ltd. Registered in England No. 4010091 Registered Office: Calderstone House, Forest Hill, Barking, Essex, SS11 3BP



## Carpenter

Specialist in domestic carpentry works such as:

- Kitchen modification or complete replacement
  - Fitted wardrobes and bedroom furniture
  - Home offices
  - Custom made furniture
  - Internal doors
  - Building 'Self Assembly' furniture
- ... and the 'DIY' you hate to do!

**Graham Taylor**

Mobile 07802 262555  
Binfield 01344 423657



[graham@binfield-carpenter.co.uk](mailto:graham@binfield-carpenter.co.uk)

## Premier Plastics

Windows | Doors | Roofing | Skylights | Guttering | Conservatories

**Up to 15% cheaper than our competitors!**

Premier offers prices you can afford and quality you won't believe!

Composite  
Doors  
From £795  
Installed



- Fensa Registered
- Insurance backed **10 Year Guarantee**
- Windows, doors and conservatories
- Roof Trim
- No pressure sales, no gimmicks
- Product BSI Kite marked

**01344 304761**

[www.premier-plastics.co.uk](http://www.premier-plastics.co.uk)

**FREE**  
Guttering and  
Downpipes on all  
Roof Trim  
Installations



Moss End Garden Village, Warfield RG42 6EJ  
Open Mon-Fri: 10-4, Sat: 10-1, Sun: closed



Proud members of  
**Checkatrade.com**  
Where reputation matters



**COMPETITIVE  
PRICES**

**FREE  
QUOTATIONS  
AND  
ADVICE**

Family run business in Harmans Water, Bracknell

**Fully Insured • NPTC Qualified • 10+ years experience**

- Tree felling, reducing, reshaping and maintenance
- Stump grinding
- Hedge trimming and maintenance
- Wood chippings and logs for sale
- All green waste recycled

*Contact us...*



01344 425733 or 07867 523823  
jose@woodchipsltd.co.uk www.woodchips.org.uk

## MOSS END GARDEN MACHINERY

At Moss End Garden Centre, Warfield, Bracknell RG42 6EJ

**SALES • SERVICE • REPAIRS**



**Lawn Mowers, Chainsaws,  
Strimmers, Shredders,  
Power Vacs, Hedge Cutters**



OPEN  
MON - SAT  
9AM - 4.45PM  
SUNDAY  
9.30AM - 12PM

**Quick Turnaround, Personal Service  
Free Local Delivery & Collection**

**BRACKNELL 01344 485765/862024**

**MOUNTFIELD**

**WEBB**

**HAYTER**

**MITOX**



# Caroline York

## Quality curtains, blinds & soft furnishings

- Hand-made curtains & Roman blinds
- Roller, venetian & vertical blinds
- Wide selection of fabrics
- Small, friendly & reliable company
- Full measuring & fitting service

**01344 450504**

[www.carolineyork.co.uk](http://www.carolineyork.co.uk)



**Enjoy one-to-one care  
Tailored for your  
wellbeing  
In your own home**

LifeCarers provides  
dependable one-to-one  
support to people at home.

Your trained LifeCarer visits  
to help with personal care  
and practical things like  
housework and shopping.



Your LifeCarer offers companionship too,  
someone to talk to or escort you on a trip out. A  
trusted person who keeps an eye on your safety  
and helps you stay in touch with your family.



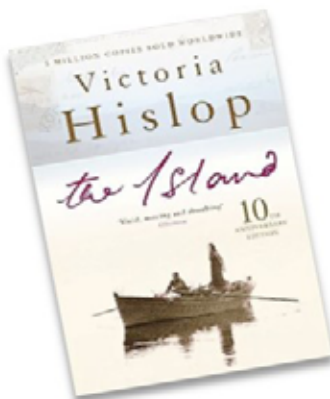
**Companionship & getting out  
Dignified & personal care  
Practical & comfortable living**

Talk to a Care Advisor on 01344 859 148 [www.lifecarers.co.uk](http://www.lifecarers.co.uk)

[lifecarers](https://www.facebook.com/lifecarers) [@life\\_carers](https://www.instagram.com/life_carers)

LifeCarers Ltd is regulated by the Care Quality Commission

# A Good Read



## ***The Island by Victoria Hislop***

It is books like this that remind you, in small ways, how fortunate we are to live in the 21<sup>st</sup> century when illnesses and diseases that were once considered a death sentence are now

curable. One such disease is leprosy which provides the background for this debut novel.

Very often associated with Biblical times, it may be shocking to people to learn that in Europe as recently as 1957, victims of this disease were sent into isolation. The last known leper colony in Europe was the island of Spinalonga off the coast of Crete. This is the island of the novel's title.

Alexis Fielding is a 25-year-old living in London who knows very little about her background other than the fact that her mother comes from Crete. For whatever reason her mother refuses to discuss her past. Frustrated by her silence, Alexis decides to take her own journey to her mother's home village, Plaka, to discover the truth that her mother will not speak of. Through an old family friend, in the heat of the Cretan sun, Alexis learns of her family history. Of her great grandmother, Eleni, and her two daughters, Maria and Anna.

More crucially she learns of the sad past of the now deserted island, just 1km from Plaka. And how her family's past is forever linked to this place where the shunned inhabitants tried to maintain some level of normalcy amidst their pain and isolation. In a culture where family is everything, how can a family continue when it is ripped apart?

***By Willow Coby***

## ***The Monster of Shiversands Cove by Emma Fischel***

Ah, a summer holiday by the beach! Hot days playing in the sand. Days full of digging and snorkelling. Sounds like bliss! At least it DID. Stan is fed up. For the last four years his family have holidayed with his best friend, Rory's, family. And this year was supposed to be the same until Rory's parents both got new jobs and moved away. Now he is stuck in a cottage by the sea with Magnus, his four-year-old brother who is insistent that he is going to spend the whole holiday searching for fairies. Of course, Stan knows that this is nonsense and that fairies don't even exist.

One night he decides he has had enough. Magnus will not stop talking about the fairy he caught and has called Harry. In a moment of anger, he agrees with Magnus that this may be a hot spot for fairies and elves, but that means it is also a hot spot for monsters! Magnus is terrified but of course he has no real need to be.

Everyone knows that monsters aren't real.

Or are they?



## **Luxury Villa: Orlando, Florida**

**Only 3 miles to Disney (5 parks)**



- 4 bedrooms, 3 bathrooms, sleeps 10
- Private heated pool/jacuzzi/games room: pool/air hockey/free internet
- Gated resort, free use of facilities: sauna, tennis, volley ball, fitness gym, internet café, BBQ, clubhouse etc.
- 15 mins Sea World/Discovery Cove
- 20 mins Universal, 45 mins beaches
- 5 mins golf, 30 mins Orlando airport
- 45 mins Busch Gardens/Space Kennedy
- **From £550 per week villa rental**
- Email: [carol@orlandovilla4parks.com](mailto:carol@orlandovilla4parks.com)
- Tel. 0777 9697341

[www.orlandovilla4parks.com](http://www.orlandovilla4parks.com)

## **CARPENTRY DECORATING**

**All aspects of Carpentry and  
Joinery**

**Fitted Kitchens, Wardrobes,  
Radiator Covers**

**Laminate and Solid Wood  
Flooring, Decking**

**Interior and Exterior Decorating**

29 YEARS EXPERIENCE

CITY AND GUILDS

**Call Mark: 01344 451995**

**07710 324954**

## **NEN BUILDING SERVICES**



**ALL TYPES OF BUILDING WORK UNDERTAKEN  
EXTENSIONS . RENOVATIONS . ALTERATIONS . CONVERSIONS  
PLASTERING . CARPENTRY . KITCHENS . BATHROOMS  
PROPERTY MAINTENANCE . DECORATING . ROOFING  
OVER 20 YEARS EXPERIENCE**

**CONTACT US FOR MORE INFORMATION OR A FREE QUOTE  
BRACKNELL : 01344 560134  
MOB : 07754 249613**

# Garden View

## This month - Fertile ground

This month the days get longer and the sun gets stronger...we hope!

However March is famously temperamental and if the soil where you are is still wet and cold then it's wise to delay planting and sowing until the temperature rises.

Plant nutrient reserves are low at this time of year so, as the soil warms up, it's time to think about fertiliser.

Many gardeners are a bit frightened of fertiliser. All those chemical symbols on the side of the packet are rather reminiscent of school chemistry lessons. In fact the basics are quite simple.

**NPK** - This can be observed on the side of most fertiliser packages. The letters stand for:

**N - Nitrogen**

**P - Phosphorous**

**K - Potassium**

Together these are known as the macro-nutrients and each of them has its own use.

**Nitrogen** primarily feeds the leafy above-the-ground parts of the plants.

**Phosphorous** promotes strong roots.

**Potassium** makes grass hardier, promotes germination and improves vegetable and fruit yields.

The proportions of each macro-nutrient will be printed on the packet. Equal amounts of each nutrient make for a good general purpose fertiliser.

A lawn will need a good balance of nitrogen and phosphorus to guarantee lush green grass with a healthy root system capable of withstanding dry spells. Fruiting plants need higher proportions of potassium.

There are other macro-nutrients: Carbon, Hydrogen and Oxygen, which plants obtain freely from the air and water; and calcium, magnesium and sulphur, which should be present in any good general purpose fertiliser.

Plants also need micro-nutrients: Iron, Manganese, Zinc, Boron and Molybdenum.

Plants take all these nutrients and build everything they need from scratch, including vitamins. What plants cannot do is absorb vitamins directly from things such as pet food, milk or so-called fertilisers which contain vitamins, proteins and fats.

So don't be intimidated by fertiliser. Decide what your plants need then read the label. It's easy as ABC..or rather NPK!



*By Rachael Leverton*

# **A. ROONEY**

## ***Fencing & Gates***

**01344 752737**  
**07708 444047**

***Free Estimates***

***Fully Insured***

***Work Guaranteed***

***References Available***

## **CM Maintenance**

Plumbing and General Maintenance

**No job too small**

Bathrooms, Kitchens, Tiling  
and General Handyman Jobs

**Charlie Cooper**

Mobile: 07788 674739

or 01344 305694

cm.maintenance@hotmail.co.uk

# **Simply Green** LANDSCAPES



*Make your neighbours  
"Simply Green" with envy*

**T** 0118 9790715  
**F** 0118 9790715  
**W** [www.simplygreenlandscapes.co.uk](http://www.simplygreenlandscapes.co.uk)

- Do you want to be admired for your well maintained gardens?
- Do you want a regular, reliable gardening company?
- Do you want all of this with no stress?

Then simply look no further!

- Regular garden maintenance and tidy ups all available.

# Useful Numbers

Crimestoppers 0800 555 111  
(Anonymous freephone number)  
Thames Valley Police 101  
(Non-emergency number)  
Emergency 999

Gas Emergency 0800 111999  
Electricity Emergency 0800 404090  
Power Cut Helpline 105  
Water Emergency 0333 0000365

Bracknell Forest Council 01344 352000  
(Customer Services)  
Bracknell Town Council 01344 420079  
Binfield Parish Council 01344 454602  
Warfield Parish Council 01344 457777  
Winkfield Parish Council 01344 885110

ChildLine 0800 1111  
Samaritans 116 123  
DrinkLine 0300 1231110

National Rail Enquiries 03457 484950  
Gatwick Airport 0844 8920322  
Heathrow Airport 0844 3351801

NHS help & advice 111  
Heatherwood Hospital 01344 623333  
Royal Berkshire Hospital 0118 3225111  
Wexham Park Hospital 01753 633000  
Frimley Park Hospital 01276 604604

South Hill Park 01344 484123  
Bracknell Leisure Centre 01344 454203  
The Look Out 01344 354400

---

## Sudoku Solution

4	3	5	1	8	2	6	7	9
6	2	9	3	4	7	5	1	8
7	8	1	9	5	6	3	4	2
3	5	7	2	6	9	4	8	1
2	1	4	7	3	8	9	6	5
8	9	6	4	1	5	2	3	7
5	7	8	6	9	4	1	2	3
1	4	2	5	7	3	8	9	6
9	6	3	8	2	1	7	5	4

## Paul White Plumbing Services

**Local  
Plumber**

- Bathroom and shower tiling
- Taps, sinks, wash basins replaced
- Bathroom suite refurbishment
- Kitchen sink waste disposal units
- Hot water storage cylinders
- Attic cold water cisterns
- Radiators replaced or repositioned
- No job considered too small

Professionally qualified  
Reliable, conscientious and  
fully insured

**Free quotation / visit  
Please call:  
01344 453 865**



## Julia Reading

BSc(Hons) Pod, MChS

### REGISTERED PODIATRIST CHIROPODIST

Treatment for:

*Corns \* Callous \* In-growing Toenails \*  
Verrucae etc.*

general foot health advice

at

**Maple Clinic**

**3 - 5 Horndean Road, Forest Park**

**Bracknell**

**(in parade of shops next to Teddies Nursery)**

For an appointment phone:

**0118 9420718 / 07746 472781**

(please leave a message and I will contact you  
as soon as possible or early evening)

**HOME VISITS AVAILABLE ON REQUEST**

## LODGE BROTHERS

YOUR 7<sup>TH</sup> GENERATION FAMILY-OWNED FUNERAL DIRECTORS



*...the family you can turn to*

When a death occurs in your family, that is when you need the advice and assistance of a local, family-owned funeral director. Lodge Brothers are the family you can turn to. Seven generations of our family have been helping and advising local families in their time of need. For over 230 years we have been providing funerals, both modest and traditional with care and compassion. Our fully qualified staff take great pride in being able to offer a 24 hour service 365 days a year.

FUNERALS • FLORAL TRIBUTES • MEMORIALS • PERSONALISED FUNERAL PLANS • LEGAL SERVICES

**NOW OPEN IN ASCOT:**

32 High Street 01344 537033

Branches also in Lightwater, Sunningdale & Windsor

**Lodge**  
BROTHERS 1780  
the family you can turn to



[www.lodgebrothers.co.uk](http://www.lodgebrothers.co.uk)

**£100 OFF**  
A PRE-PAID FUNERAL PLAN

**TERMS AND CONDITIONS** 1. This voucher entitles the bearer to £100 off one of our Pre-Payment Funeral Plans, it may not be exchanged for cash. 2. The discount will be deducted from the retail price of the Funeral Plan at the time of purchase. 3. One discount voucher only per plan. 4. Subject to the Terms and Conditions of the Funeral Plan purchased. 5. The voucher does not apply when paying for the plan by monthly payments. 6. These vouchers cannot be used against 'Direct Cremation' plans. Valid until 30th April 2018. REF:WORD.

# D B Roofing

**Accomplished Craftsmen  
with a wealth of experience**

- ♦ Tiling and Slating
- ♦ Lead Work
- ♦ Flat Roofs
- ♦ Re-Roofs
- ♦ Re-Pointing
- ♦ General Roof Maintenance
- ♦ Fascias, Soffits & Guttering
- ♦ Free Estimates
- ♦ All Work Guaranteed

**Call for a friendly and  
affordable service on:**

**01344 453732**

**07799 037866**

## **Elegans** Menswear



Men's formal wear to hire or to buy  
for Weddings, Ascot, Evening wear,  
Office suits, Designer Menswear

t: 01344 302780

[www.elegansmenswear.com](http://www.elegansmenswear.com)

## ST DAVID'S DAY

**March 1st**

St David is the patron saint of Wales and bizarrely also the patron saint of doves (who knew?). In Welsh he is Dewi Sant. He was born around 500AD and his parents were a Prince, and the daughter of a Chieftain. He was

recognised as a national patron saint at the height of Welsh resistance to the Normans.

David is said to have cured his tutor Paulinus of blindness, by making the sign of the cross. Realising that his protégé was blessed, Paulinus sent him off as a missionary to convert the pagan people of Britain.

He became a priest and is remembered for helping to spread christianity across the continent, founding 12 monasteries during



his lifetime. These monasteries were known for their extreme asceticism, where monks abstained from worldly pleasures, living on a diet of bread, vegetables, water and milk. At one monastery however the life of austerity was so

unpopular that the monks attempted to poison David. The story goes that David ate the poisoned bread after blessing it, and thus came to no harm.

His best know miracle was raising a hill that he was standing on to deliver a sermon when people at the back couldn't hear.

In his final sermon he asked his monks to '*Do the little things you've seen me doing.*'

**By Helen Jones**



# Steve Coventry

Painter and Decorator

19 Worcestershire Lea  
Warfield Berkshire RG42 3TQ

- Interiors & Exteriors
- Coving
- Painting
- Wallpapering
- Paint Effects
- Insurance Work

Free Estimates

01344 486555 • 07810 348982

## D.M.S.

Landscaping & Building Services

- Garden Design and Build
- Hard and soft Landscaping
- Patios
- Driveways
- Fencing
- Turfing
- Garden Clearance
- Now supply and fit Log Cabins and Outdoor Wooden Buildings
- Extensions
- Conservatories
- All Groundwork
- All Brickwork
- Decking
- Planting
- Paths
- All Walling
- All Sleeper work
- Artificial Lawn

Berkshire, Surrey & Hampshire

For a free quotation call Daniel:

Tel. 01276 452337

Mob. 07944 681780



Find us on Facebook

Email: danmadden1979@hotmail.com



Registered with

# BLUE SAPPHIRE BOOK-KEEPING LTD

SMALL FRIENDLY EXPERIENCED LOCAL COMPANY FOR ALL  
YOUR BOOK-KEEPING NEEDS

EXPERIENCE IN LARGE AND SMALL BUSINESSES INCLUDING  
SOLE TRADERS AND FRANCHISES

VAT  
PAYROLL  
BOOK-KEEPING  
MANAGEMENT ACCOUNTS  
INCOME TAX RETURNS



CALL MARION TO DISCUSS YOUR NEEDS

TEL: 07920 045350

E MAIL: [marion@bluesapphirebookkeeping.co.uk](mailto:marion@bluesapphirebookkeeping.co.uk)

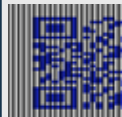
WEB: [www.bluesapphirebookkeeping.co.uk](http://www.bluesapphirebookkeeping.co.uk)

## Computer Help

- ◇ Windows 10 issues?
- ◇ Virus detection & removal
- ◇ Slow PC or Laptop?
- ◇ Data transfer & backups
- ◇ Broadband & Wireless connections
- ◇ Printing, Email & Software issues
- ◇ Custom-built PCs & Upgrades
- ◇ Regular check-ups
- ◇ Configuration of iPads, tablets etc.
- ◇ Help, Advice & Tuition

01344 409019 / 07944 976422

[info@berkshirepchospital.com](mailto:info@berkshirepchospital.com)



We also provide  
computer help  
to Warfield Park  
residents

# INDEX

## Accounting

Blue Sapphire Book-keeping

## Architects

Good Developments

## Care Services

LifeCarers

## Chiropodists

Registered Podiatrist

## Cleaning

Domestique

## Computer Services

Computer Help

## Curtains & Blinds

Caroline York

## Decorators

Noble Painting

Steve Coventry

Thomas Painter & Decorator

## Electricians

Warfield Electrical

## Estate Agents

22 Richard Worth

## Fencing Services

3 A Rooney Fencing & Gates

## Funeral Directors

13 Lodge Brothers

## Gardens/Landscaping

19 Moss End Garden Machinery

Simply Green Landscapes

Supagrass

3 Trulawn

Woodchips Tree Surgery

## Health & Fitness

The Wellness Centre

## Holidays

Orlando Villa

## Kitchens & Bedrooms

21 Applewood Kitchens

9

## Menswear

Elegans Menswear

10

## Milliners

Get Ahead Hats

## Oven Cleaning

24 OvenGleaners

SGH Services

7

23

## Plumbers

Heat & Plumb

Heat Plant Services

19 Paul White Plumbing

9

11

19

## Property Maintenance

12 Carpenter

17 CM Maintenance

9 DMS Building & Landscaping

5 Just Wood

12 NEN building Services

TBG Home

Thomas Painter & Decorator

11

17

21

15

15

10

9

## Roofing

15 DB Roofing

15

## Student Accommodation

Host Link UK

1

## Windows & Doors

Premier Plastics

20

11

23

## The Word

Advertise here from only  
£27 per month.

For more information call  
01344 444657 or email  
info@wordmag.co.uk



Hats for hire and sale for all events  
including weddings, Ascot and  
Henley Regatta

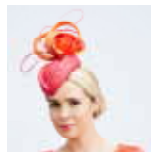
A large selection of hats, perchers  
and fascinators

Please telephone for an appointment:

**01344 306948**

Coppid Beech House, London Road,  
Binfield RG42 4BS

Email: margaret@getaheadhats.co.uk



## Homestays for Students Wanted

We require friendly and hospitable  
families to accommodate  
international and UK students -  
from a few nights to a few weeks.

**Earn up to £250+ per room per week.**

For further details, or to register:

**07958 343 981 • 0118 987 5350**  
admin@hostlinkuk.com



## OVEN CLEANING

*Your worst chore?  
I have the 'Solution'*

Ovens, Ranges, AGAs, Hobs, BBQs  
and Extractors expertly cleaned.

*\*Repairs available too!\**

An experienced and professional  
service with full public liability  
insurance.

Call: **07808 803 808**

Email: simongservices@gmail.com

Website: [www.ovenme.com](http://www.ovenme.com)



# Outgrown your home or fancy a fresh start?

Contact us today to arrange your **FREE**  
**VALUATION** and get moving this Spring.



# RICHARD WORTH

ESTATE AND LAND AGENTS

local - experienced - trusted



**The Bracknell Office**

8 West View, Market Street, Bracknell

**01344 311 110**

**RICHARD-WORTH.CO.UK**

**THE WORD**

**Tel. 01344 444657**

**E-mail: [info@wordmag.co.uk](mailto:info@wordmag.co.uk) Web: [www.wordmag.co.uk](http://www.wordmag.co.uk)**

